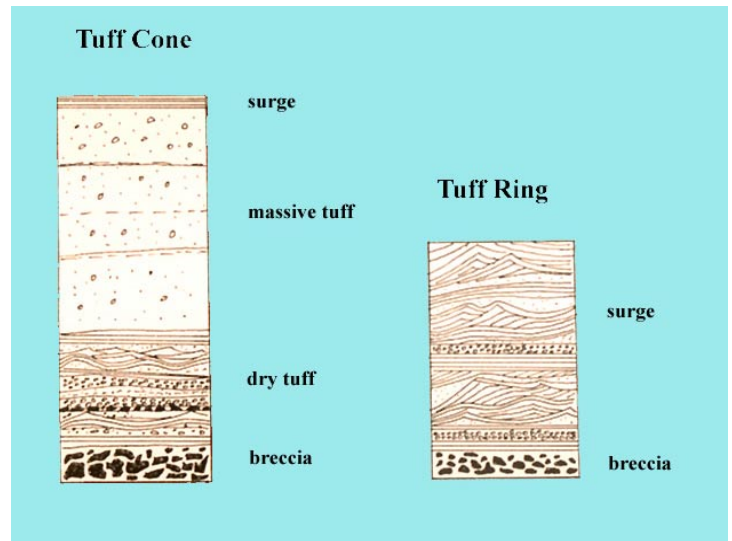
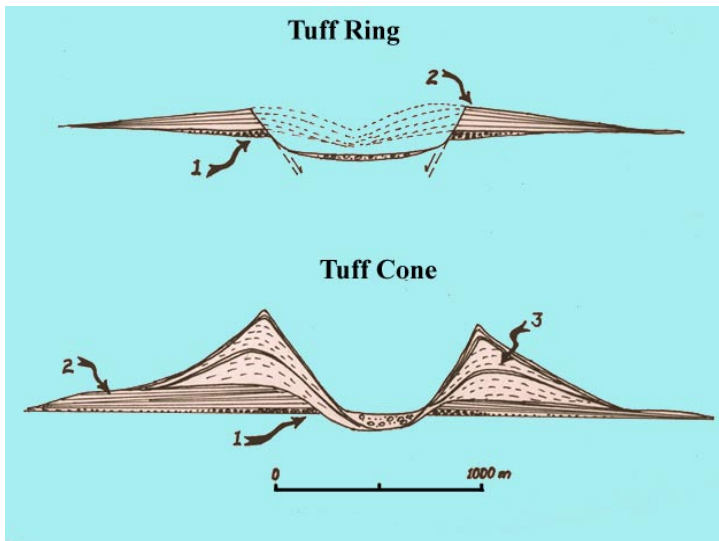
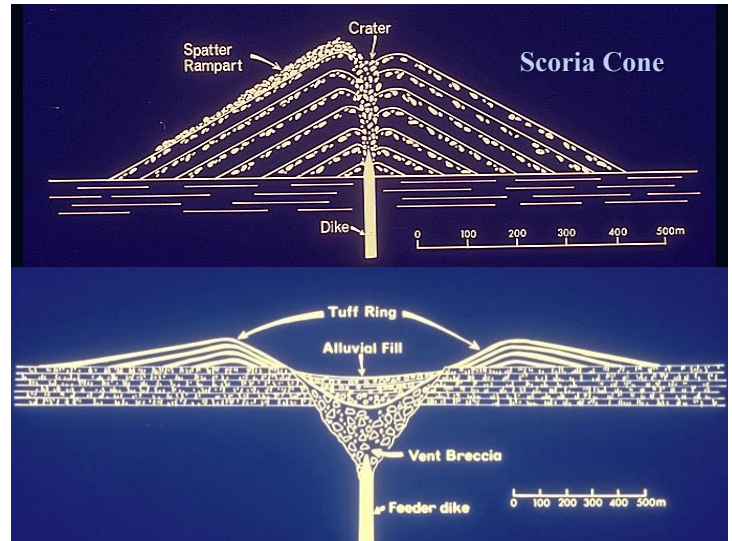


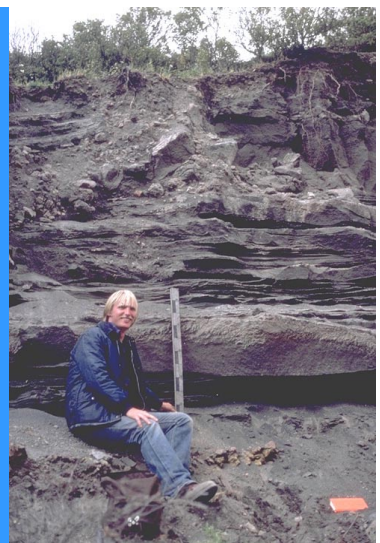
# Tuff Rings and Tuff Cones

- Origin
- Associated with many types of eruptions
  - a) Hawaiian
  - b) Strombolian
  - c) Surtseyan (tuff cones)
  - d) Vulcanian



## Sugarloaf Mountain

- Thin-bedded strata
- Dry surge beds
- Relatively thin section
- Sand wave, massive, and planar beds
- Impact sags



Elegante Crater



Cerro Colorado



Cerro Colorado



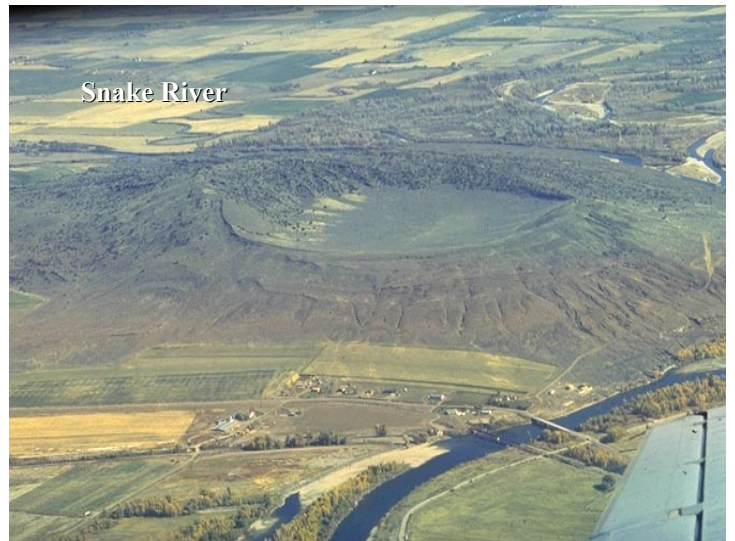
Cerro Colorado



Shirine



Snake River



**Vulcano**



**Vulcano**

